

# Introduction to Qiaolong Emergency





# About Us - Fujian Qiaolong Emergency Equipment Co., Ltd.

## **Our Mission:**

To take safety emergency response as the core business, and contribute to a resilient society.

## **Our Vision:**

To promote the spirit of craftsmen and build a century-old enterprise.

## **Our Core Values:**

We are devoted to serving the country with sincerity, leading through innovation, providing precise service and pursuing excellence.

- **Founded in 2000**
- **Registered Capital of 60 million RMB**
- **About to be a Listed Company in Shenzhen Stock Exchange (Approval Doc. Acquired on July 2023)**
- **A specialized supplier and service provider engaged in the research, development, manufacturing, and sales of emergency rescue equipment for water supply, drainage, and other related applications**
- **Proactive and relatively early in applying hydraulic-driven water pump technology in China**

# Corporate Honors



- National 119 Firefighting Award
- The first batch of Little Giant Enterprises that use specialized and sophisticated technologies to produce novel and unique products
- Single-product Champion Enterprise of Manufacturing Industry of Fujian Province
- The 17th China Patent Excellence Award
- High-tech Enterprise
- The Academician and Expert Workstation
- Fujian Province May Day Labor Certificate
- The 20th China Patent Excellence Award

# Research and Development (R&D) Capability

- Adheres to **independent research and continuous innovation**
- Possesses scientific research platforms such as **Longyan Technical Center, Xiamen Research and Development Center, and the academician and expert workstation**



# Research and Development (R&D) Capability

- Obtains over 260 granted patents, including 39 invention patents



- Takes the lead in formulating the industry standard for "Drainage Rescue Vehicles"
- Undertakes more than 10 national, provincial, and municipal-level scientific and technological projects



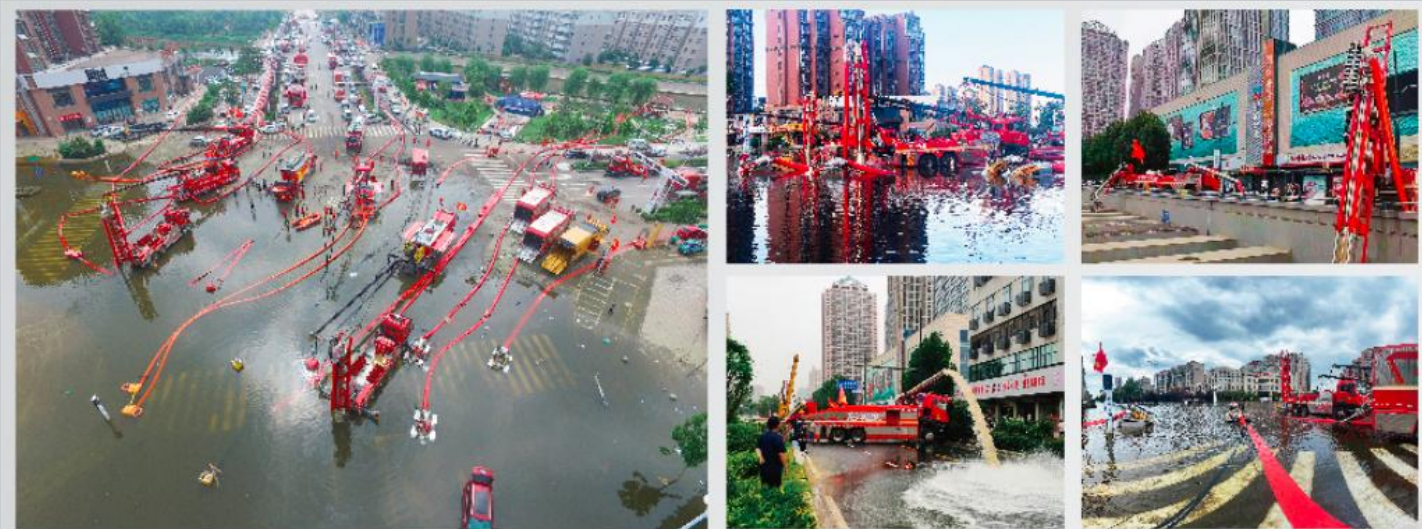
# Social Responsibility



- Played a significant role in disaster relief operations during various disastrous events, including:
- The Beijing "7.21" torrential rains
- Super typhoons such as “Goni”, “Dujuan”, “Nepartak”, “Mangkhut”, “Lekima” and “Haikui”
- The floods in southern provinces in 2020



# Social Responsibility



- The heavy rainstorm in Zhengzhou, Henan province in 2021



- The "7.15" Zhuhai tunnel flooding

# Social Responsibility

- Contributed our efforts to emergency support in major events like:
- BRICS Xiamen Summit
- G20 Hangzhou Summit
- First China International Import Expo





# Social Responsibility

- Over the years, Qiaolong Emergency has been rushing to the frontlines of disaster relief in various places with the "Longxishui" equipment



Letter of Appreciation from Xiamen Municipal Highway Bureau, Fujian Province, dated June 2013



Letter of Appreciation from the Municipal Government of Fuzhou, dated August 18, 2015



Letter of Appreciation from the Municipal Government of Wuhan, dated July 8, 2016



Letter of Appreciation from the Hydroelectric Command of the Chinese People's Armed Police Force, dated August 4, 2016



Letter of Appreciation from the Command Center for Flood Control, Drought Prevention, and Typhoon Defense of Zhuhai City, dated September 3, 2017



Letter of Appreciation from the Command Center for Flood Control, Drought Prevention, and Typhoon Defense of Shenzhen City, dated October 13, 2018



Letter of Appreciation from Shouguang Municipal Committee of the Communist Party of China, dated 2018



Letter of Appreciation from Shouguang Municipal Committee of the Communist Party of China, dated August 22, 2019



Letter of Appreciation from Office of the Command Center for Flood Control, Drought Prevention, and Typhoon Defense in Guancheng Sub-district, dated June 15, 2020



Letter of Appreciation from Office of the Command Center for Flood Control, Drought Prevention, and Typhoon Defense of the Municipal Government of Zhongshan, dated Oct.18, 2021



Letter of Appreciation from China Ameng Group Science and Industry Limited, dated May 25, 2022



Letter of Appreciation from Shanwei City Emergency Management Bureau, dated May 14, 2022



Letter of Appreciation from Guangdong Provincial Emergency Management Department, dated July 1, 2022



Letter of Appreciation from Guangdong Provincial Emergency Management Department, dated July 1, 2022

# Apparatus and Equipment



- Independently developed "Longxishui" series of water supply and drainage equipment
- Sold to 30 provinces (municipalities and autonomous regions) in China
- Widely used in industries such as the armed police, firefighting, water conservancy, municipal, petrochemicals, power and subway

# Apparatus and Equipment



- Independently developed "Longxishui" series of water supply and drainage equipment
- Sold to 30 provinces (municipalities and autonomous regions) in China
- Widely used in industries such as the armed police, firefighting, water conservancy, municipal, petrochemicals, power and subway

# Remote-Controlled Separated Water Supply and Drainage Emergency Rescue Vehicle

※ Customizable Paint Options

※ Optional 1~2 350-500m<sup>3</sup>/h Hydraulic Hand Pump

## Primary Applications

Municipal and highway emergency drainage; Emergency flood control and drainage; Cofferdam pumping; Drought resistance and emergency response, agricultural Irrigation; Pumping and cleaning polluted water surface; Pumping and drainage in areas without fixed pumping stations or power supply, etc. Particularly suitable for drainage in urban underground car parks, underground passages, highway tunnels, culverts, subways, factories, mines, and other low-lying environments or drainage situations unsuitable for personnel entry.

Remote Control

Applied in Complex  
Working Conditions

Efficient Work

Convenient Operation



- Fully hydraulic, equipped with small crawler tracks, the water pump and auxiliary mechanisms are all hydraulically driven, eliminating any electrical safety hazards
- Large flow rate and high lift
- The water pump has a simple flow path, **strong anti-clogging performance**, and can be used in various complex working conditions
- Can be controlled both wired and wirelessly, with a wireless remote control range of up to **100m**
- The tracked vehicle can work normally for an extended period while being submerged in water

# Remote-Controlled Separated Water Supply and Drainage Emergency Rescue Vehicle

※ Customizable Paint Options

※ Optional 1~2 350-500m<sup>3</sup>/h Hydraulic Hand Pump

## Primary Applications

Municipal and highway emergency drainage; Emergency flood control and drainage; Cofferdam pumping; Drought resistance and emergency response, agricultural Irrigation; Pumping and cleaning polluted water surface; Pumping and drainage in areas without fixed pumping stations or power supply, etc. Particularly suitable for drainage in urban underground car parks, underground passages, highway tunnels, culverts, subways, factories, mines, and other low-lying environments or drainage situations unsuitable for personnel entry.

Applied in Complex Working Conditions

Efficient Work

Convenient Operation

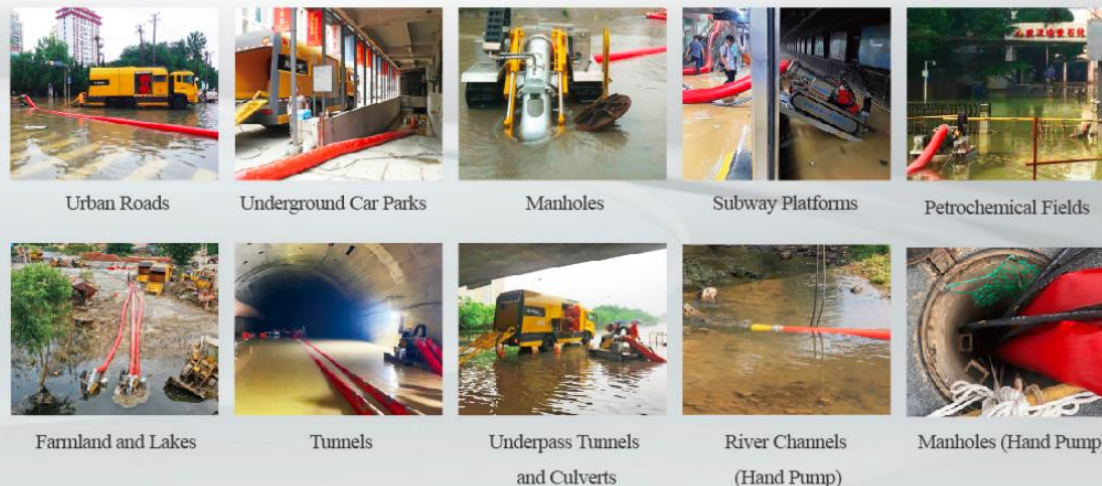
Remote Control



## Primary Specifications

Characteristic	Parameters		
Flow Rate (m <sup>3</sup> /h)	1000	1500	3000
Head (m)	22	15	15
Working Range of the Tracked Vehicle (m)	50	50	50
Minimum Suction Depth(m)	0.15	0.15	0.3
Flipping and Lifting Angle (°)	0~85	0~85	0~49

## Applicable Working Conditions



# Vertical Supply and Drainage Emergency Vehicle

1000/1500/3000/5000

## Vertical Supply and Drainage Emergency Vehicle

✘ Customizable Paint Options

✘ Optional 1~2 350-500m<sup>3</sup>/h Hydraulic Hand Pump

### Primary Applications

Municipal and highway emergency drainage; Emergency flood control and drainage; Cofferdam pumping; Drought resistance and emergency response, agricultural Irrigation; Aquaculture; Pumping and drainage in areas without fixed pumping stations or power supply, etc. Particularly suitable for manhole entry drainage operations, drainage of urban roads, overpasses, underpasses, tunnels, and removal of accumulated water at locations such as main highways and entrance/exit ramps.

Wide Working Range

High Lift and Large Flow Rate

Convenient Operation

Suction Depth Larger than 5m



- Fully hydraulic, the water pump and auxiliary mechanisms are all hydraulically driven, eliminating any electrical safety hazards
- Large flow rate and high lift
- The water pump has a simple flow path, **strong anti-clogging performance**, and can be used in various complex working conditions
- Large working area, no need for additional auxiliary equipment, and **the pump and pipe can be suspended for convenient usage**
- **Large working range**, convenient operation, capable of working with municipal standard 700-type (1000m<sup>3</sup>, 1500m<sup>3</sup>) manholes
- Can extend below the ground (bridge deck) for drainage in overpasses and underpasses
- **Capable of vertical water intake**, and can also use rigid pipes to drain water upwards

# Vertical Supply and Drainage Emergency Vehicle

## 1000/1500/3000/5000 Vertical Supply and Drainage Emergency Vehicle

✘ Customizable Paint Options

✘ Optional 1~2 350-500m<sup>3</sup>/h Hydraulic Hand Pump

### Primary Applications

Municipal and highway emergency drainage; Emergency flood control and drainage; Cofferdam pumping; Drought resistance and emergency response, agricultural Irrigation; Aquaculture; Pumping and drainage in areas without fixed pumping stations or power supply, etc. Particularly suitable for manhole entry drainage operations, drainage of urban roads, overpasses, underpasses, tunnels, and removal of accumulated water at locations such as main highways and entrance/exit ramps.

Wide Working Range

High Lift and Large Flow Rate

Convenient Operation

Suction Depth Larger than 5m



### Primary Specifications

Characteristic	Parameters				
Flow Rate (m <sup>3</sup> /h)	1000	1500	1500	3000	5000
Head (m)	22	17	35	15	10
Maximum Suction Depth (mm)	12100	8900	8900	8000	8000
Maximum Discharge Height (mm)	8500	7700	7700	9100	9100
Maximum Water Intake Distance from Vehicle's Rear (mm)	14000	10800	10800	10700	10700
Maximum Water Retrieval Radius (mm)	13300	10100	10100	10000	10000

### Applicable Working Conditions



Urban Roads



Underground Car Parks



Manholes



Reservoirs



Famland and Lakes



Tunnels



Underpass Tunnels  
and Culverts



Underpass Tunnels  
and Culverts



River Channels  
(Hand Pump)



Manholes (Hand Pump)



# Compact Tracked Self-priming All-Terrain Remote-Controlled Mobile Pumping Station

## Primary Applications

Can meet the drainage needs of narrow areas such as communities, alleyways, and underground car parks, and suitable for all-terrain environments such as muddy areas and swamps.

Efficient Work

Remote Control

Convenient Operation

Applied in Complex Working Conditions



Drainage

Drought Resistance

Water Supply

- **Rubber tracks for walking**, the water pump is directly driven by the engine, with high transmission efficiency
- Auxiliary mechanisms are all hydraulically driven, eliminating electrical safety hazards
- Can be controlled both wired and wirelessly, with a wireless remote control range of up to **100m**
- The overall vehicle size is small, easy to operate, and **can be started remotely**
- Large drainage flow rate and high lift
- The control system is waterproof, **safe, and reliable**
- Operate in **all-terrain environments**, and **work continuously** in all weather conditions
- **Self-contained lighting system** meets the needs of nighttime operations
- Can achieve multiple units operating in series



# Compact Tracked Self-priming All-Terrain Remote-Controlled Mobile Pumping Station

## Primary Applications

Can meet the drainage needs of narrow areas such as communities, alleyways, and underground car parks, and suitable for all-terrain environments such as muddy areas and swamps.

Efficient Work

Remote Control

Convenient Operation

Applied in Complex Working Conditions



Drainage

Drought Resistance

Water Supply

## Primary Specifications

Characteristic	Parameters
Flow Rate (m³/h)	200-800
Head (m)	10-30
Suction Head (m)	6.5
Maximum Gradient (°)	30

## Applicable Working Conditions



Urban Roads



Underground Car Parks



Subway Tracks



Manholes



Subway Platforms

# Multi-functional Portable Pickup Truck Electric Drainage Vehicle

## Multi-functional Portable Pickup Truck Electric Drainage Vehicle

790

Integrated System Combining Functions of Emergency Drainage,  
Power Supply and Lighting



- **Efficient and Safe Drainage**
- The portable electric submersible pump (ESP) can be easy to install and capable of rapidly draining water. The flow rate of a single pump can reach **500m<sup>3</sup>/h**, with a head of **10m**. By selecting appropriate cables, the operating distance between the electric pump and the vehicle can reach over **500m**. By replacing the water pump module, it can switch to high lift drainage. The motor protection level is **IP68**, ensuring safety of use.

# Multi-functional Portable Pickup Truck Electric Drainage Vehicle

## Multi-functional Portable Pickup Truck Electric Drainage Vehicle

790

Integrated System Combining Functions of Emergency Drainage, Power Supply and Lighting



- **Multifunction Integration**
- The equipment is multifunctional, integrating **power generation system, water pump control system and lighting system**. Can **monitor** the operation of the generator set through a mobile phone or computer.
- **Smart Control**
- It has various control modes, such as **wireless remote control and local control**, to enhance the reliability of equipment usage.

# Multi-functional Portable Pickup Truck Electric Drainage Vehicle

## Multi-functional Portable Pickup Truck Electric Drainage Vehicle

790

Integrated System Combining Functions of Emergency Drainage, Power Supply and Lighting



### Primary Specifications

#### Diesel Power Generation System

Characteristic	Parameters
Rated Power(kW)	30
Standby Power(kW)	33
Rated Voltage(V)	400/230

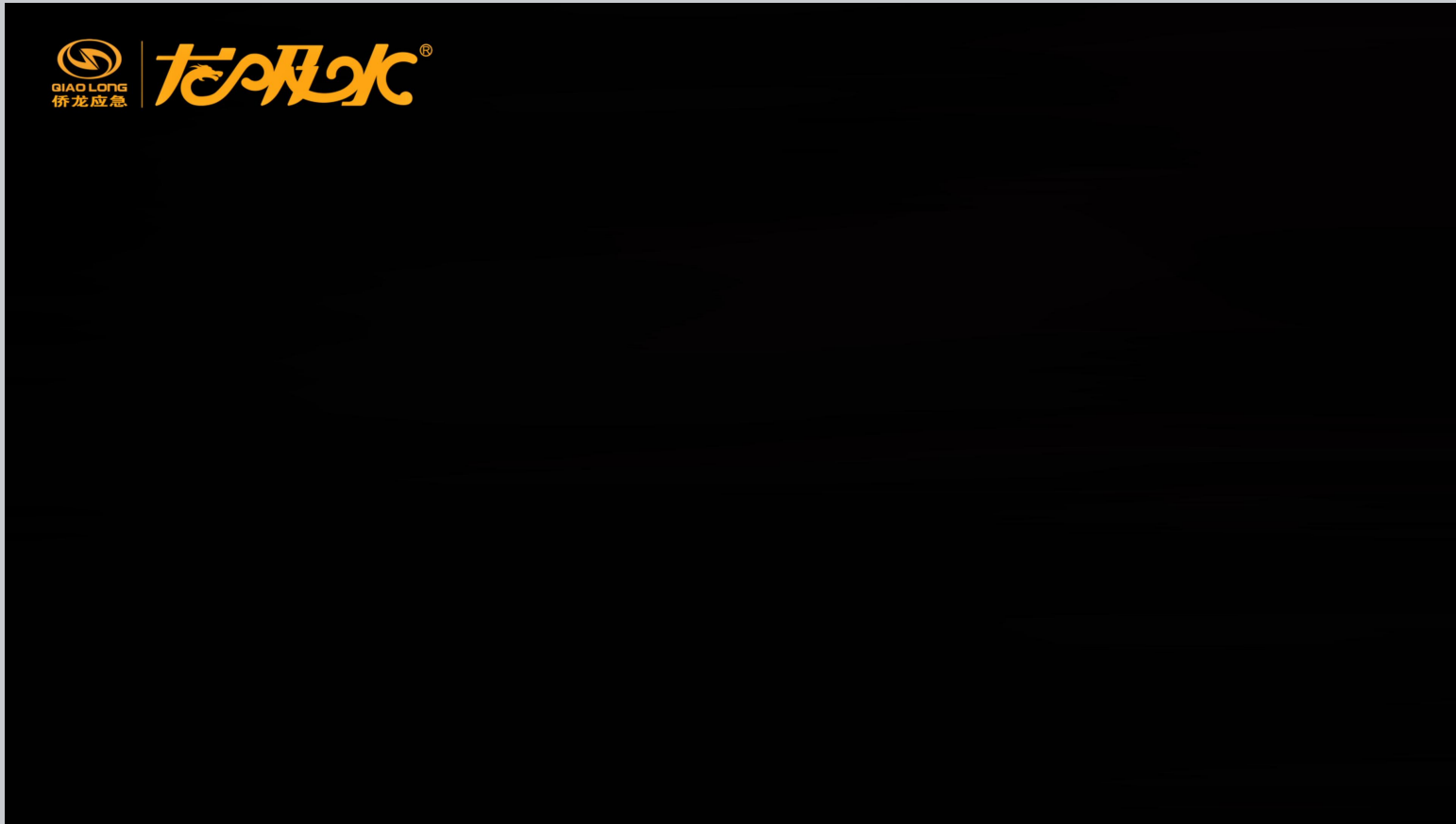
#### Drainage System

Characteristic	Parameters	
Pump Power(kW)	22	22
Flow Rate(m <sup>3</sup> /h)	500	150
Head(m)	10	35
Weight(kg)	≤30	≤30

### Applicable Working Conditions

- Used for emergency power supply, lighting, outdoor drainage operations, urban flood control, agricultural drought resistance, municipal engineering and emergency drainage.

# Products in Recent Official News Reports



- Drainage for **Underpass Tunnel** against **Severe Typhoon “Haikui”** on September 2023
- Highlight: 3000 Vertical Water Supply and Drainage Emergency Vehicle

# Products in Recent Official News Reports



- Drainage for Underground Car Parks in complex working conditions
- Highlight: 3000 Remote-Controlled Separated Water Supply and Drainage Emergency Vehicle

# Industry Applications

- **Oil & Gas Industry:** Refineries, Oil/Gas Storage Tanks, Pipelines,;
- **Plants and Infrastructures:** Chemical Plants, Steel Plants, Power Plants, Ports and others;
- **Coal Mines:** Open-pit Mines & Deep-well Mines;
- **Dewatering Solution:** Municipal, Highway, Flood Control, and more;
- **Remote Water Supply and Forest Firefighting.**

Thanks!

